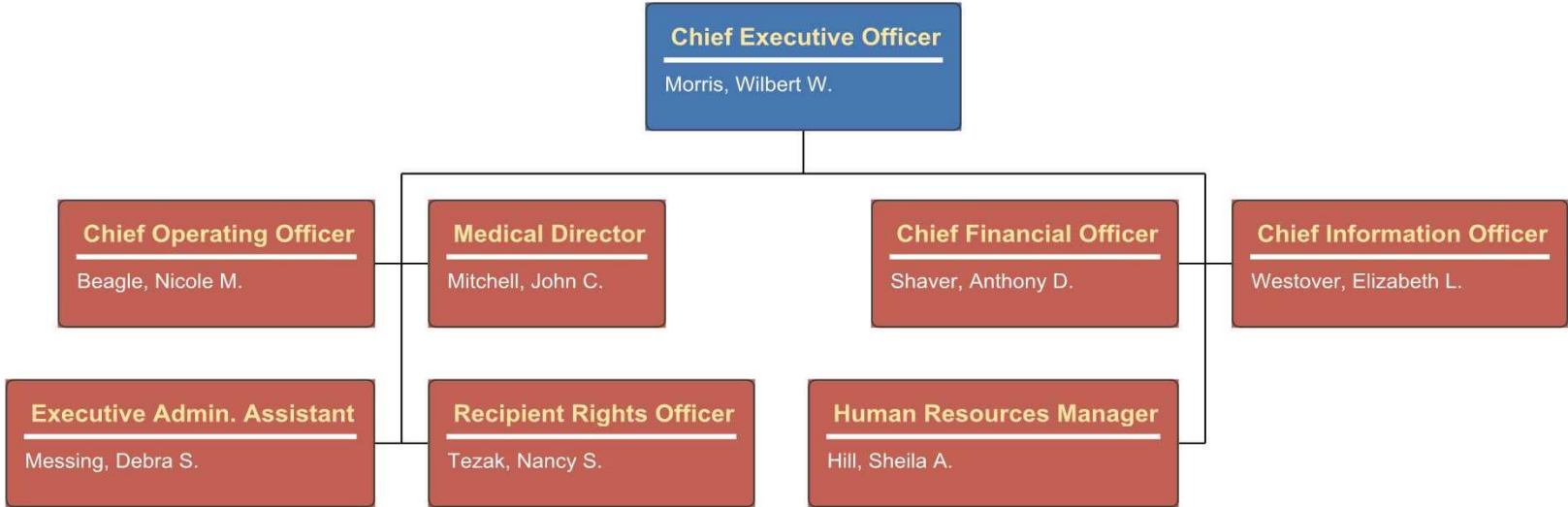


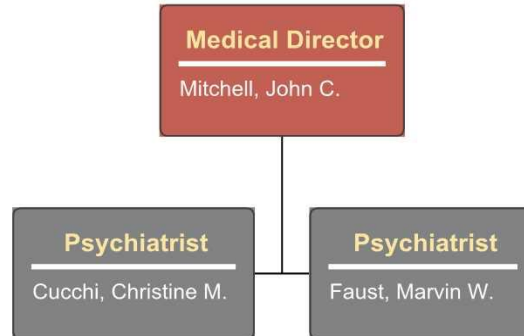


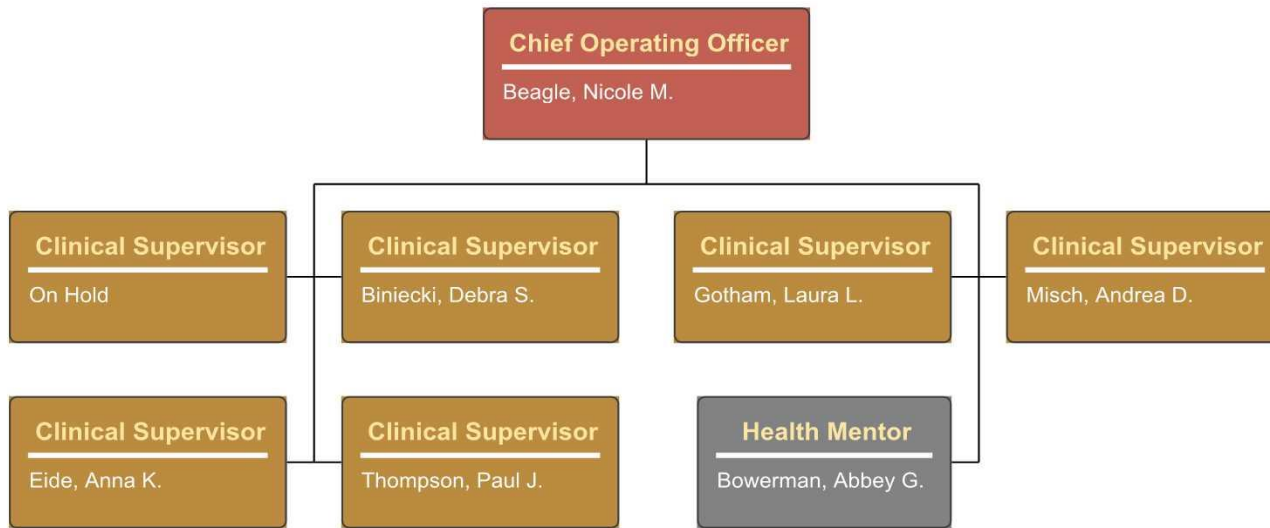
Sanilac County Community Mental Health Authority

Organizational Chart

July 8, 2022









Clinical Supervisor
Misch, Andrea D.





Clinical Supervisor
Thompson, Paul J.

Home Based Therapist
21-09 Pending Start Date

Home Based Therapist
21-14 Vacancy

Clinician/Care Manager
Prentice, Scott

Care Manager
Wilkins, Toccarra

Care Manager
Watta, Kasaundra M.

Clinical Coordinator
Studer, Breonna R.

Care Manager
Brown, Katelyn M.

Care Manager
Bonesteel, Teresa

Care Manager
Martus, Katelynn M.

Youth Peer Support Specialist
Havens, Cassidy F.

Tech- Care Manger Assistant
Webber, Tara M.

Clinician/Care Manager
Longuski, Kami J.

Tech- Care Manger Assistant
Tubbs, Laken M.

Tech- Care Manger Assistant
Osborn, Nichole M.

Parent Support Partner
Stapley, Patricia L.

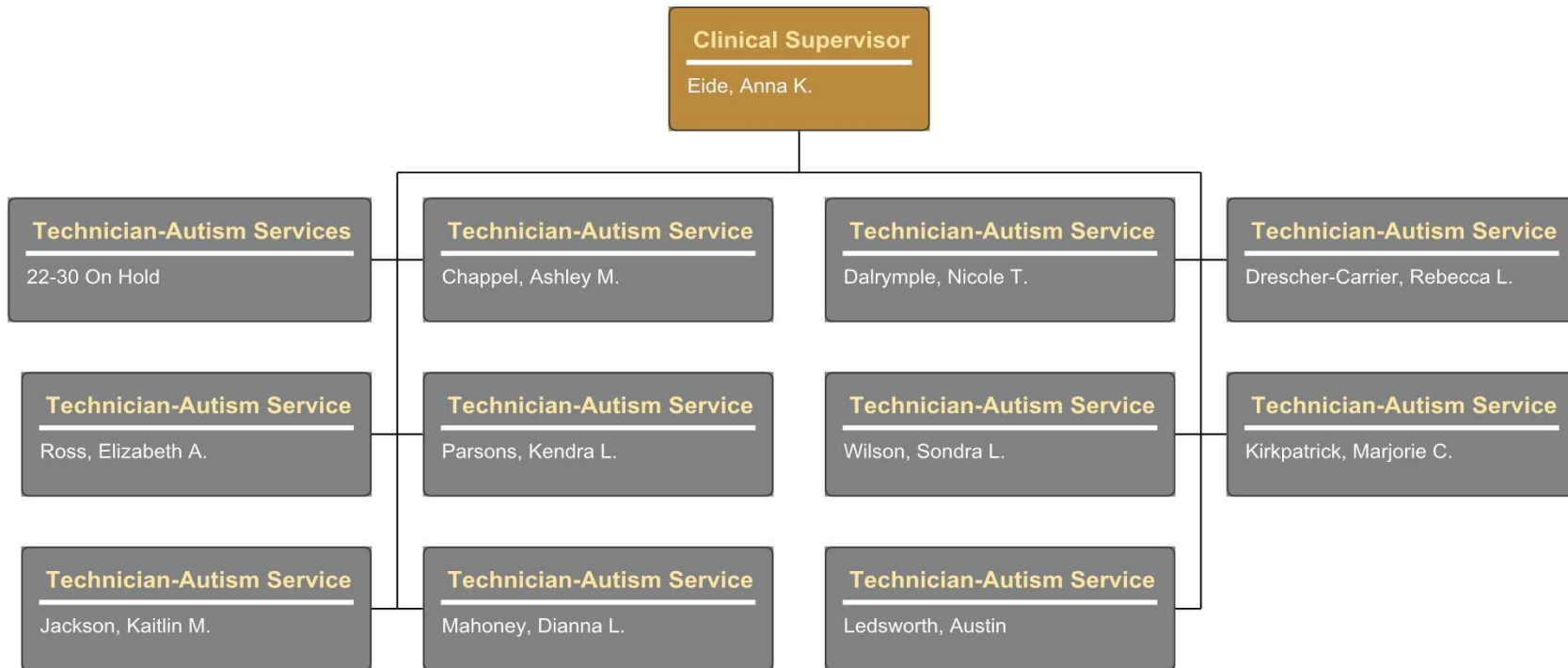
Infant Mental Health Professional
McFarlane, Deann M.

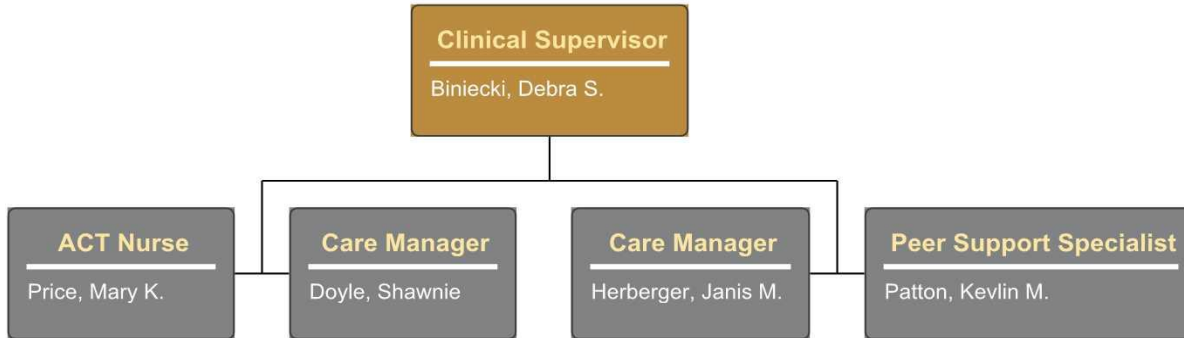
Home Based Therapist
Kosal, Tricia L.

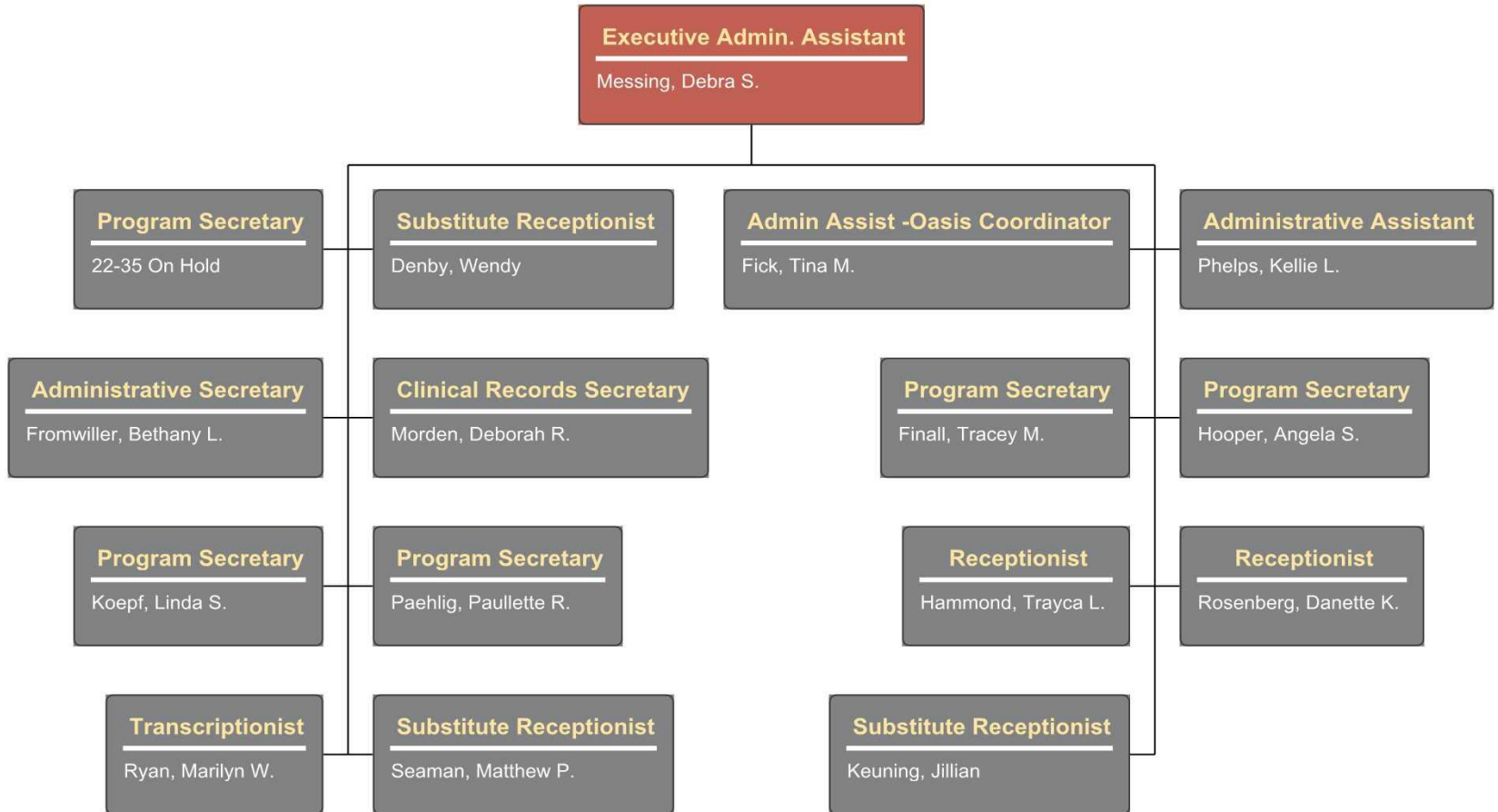


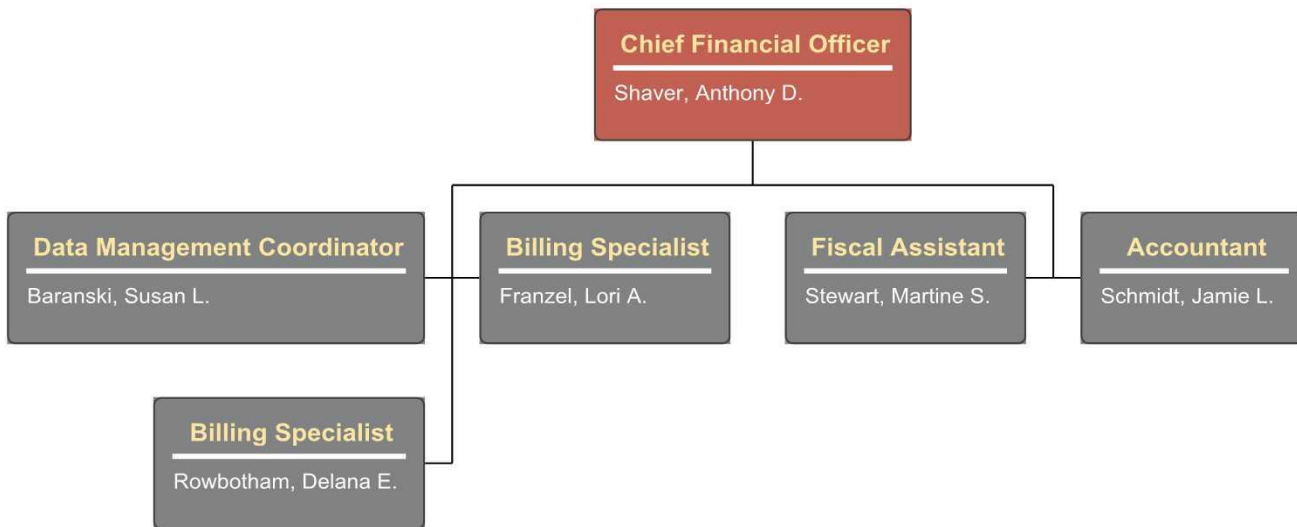
Clinical Supervisor
Gotham, Laura L.

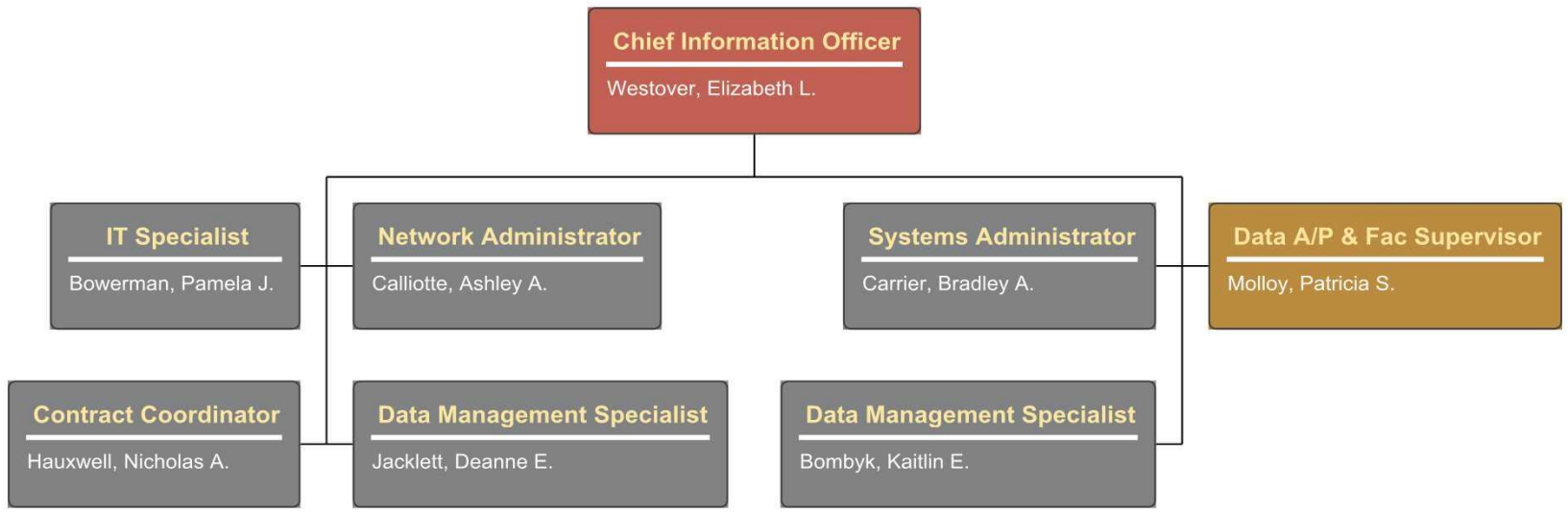


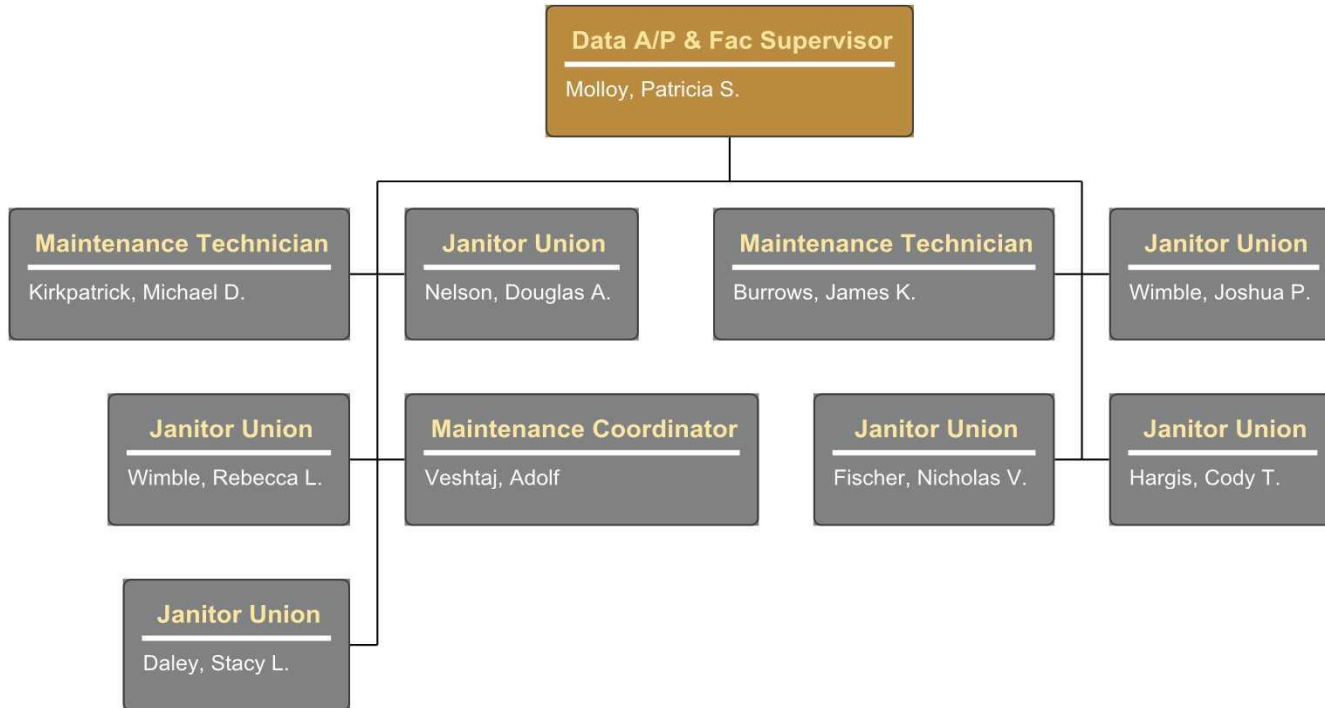














Recipient Rights Officer

Tezak, Nancy S.

RR/HR Assistant

Osborn, Jennifer L.

