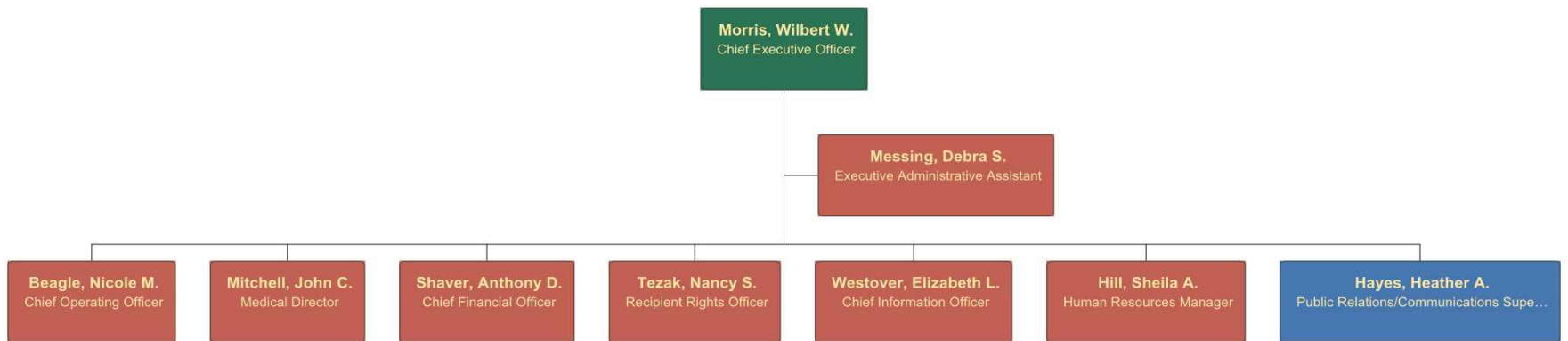


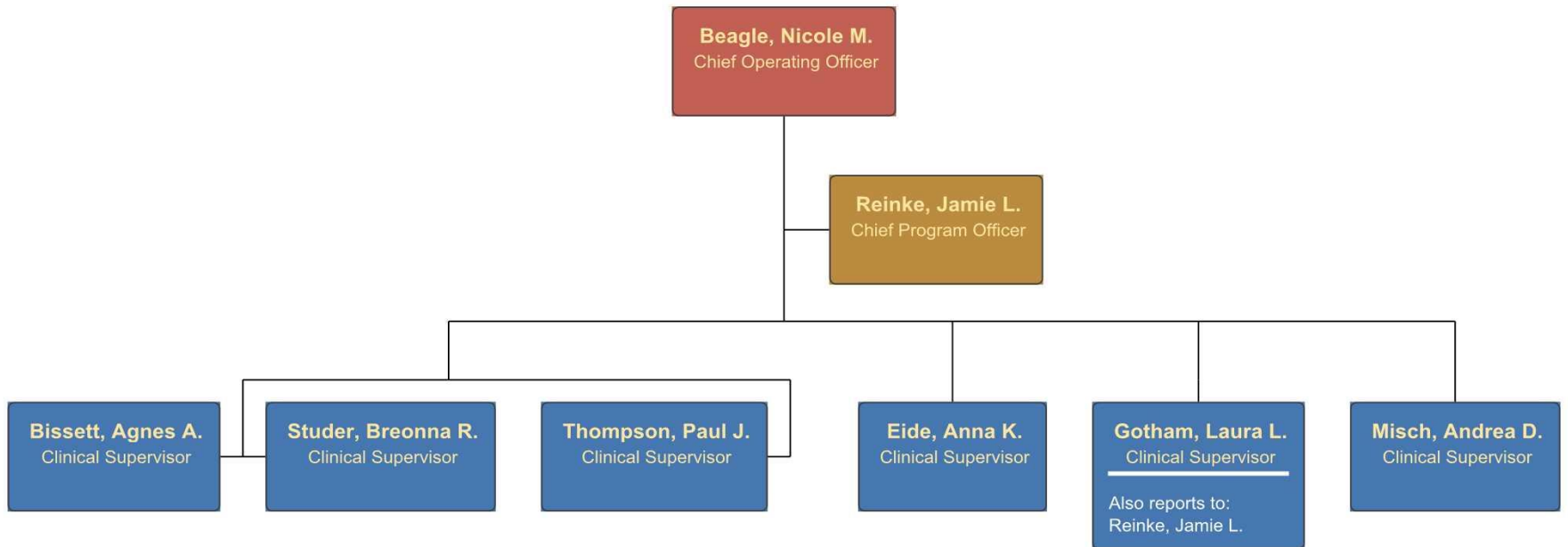


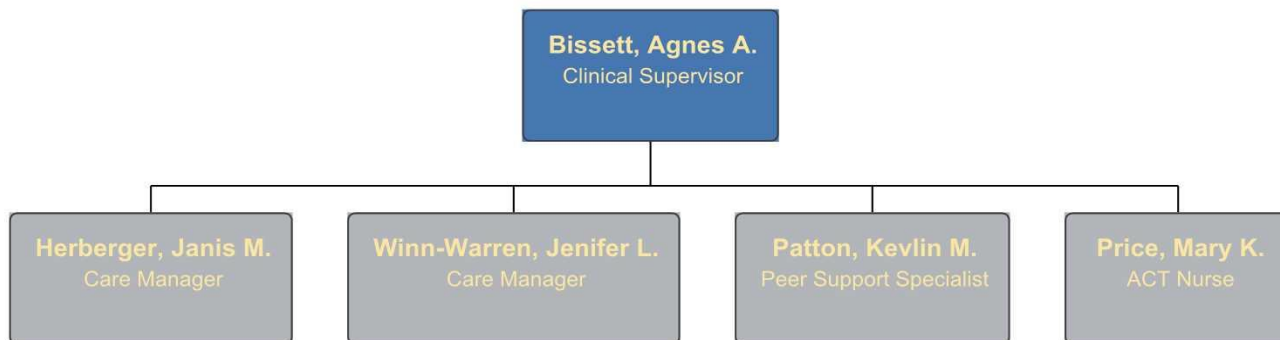
# Sanilac County Community Mental Health Authority

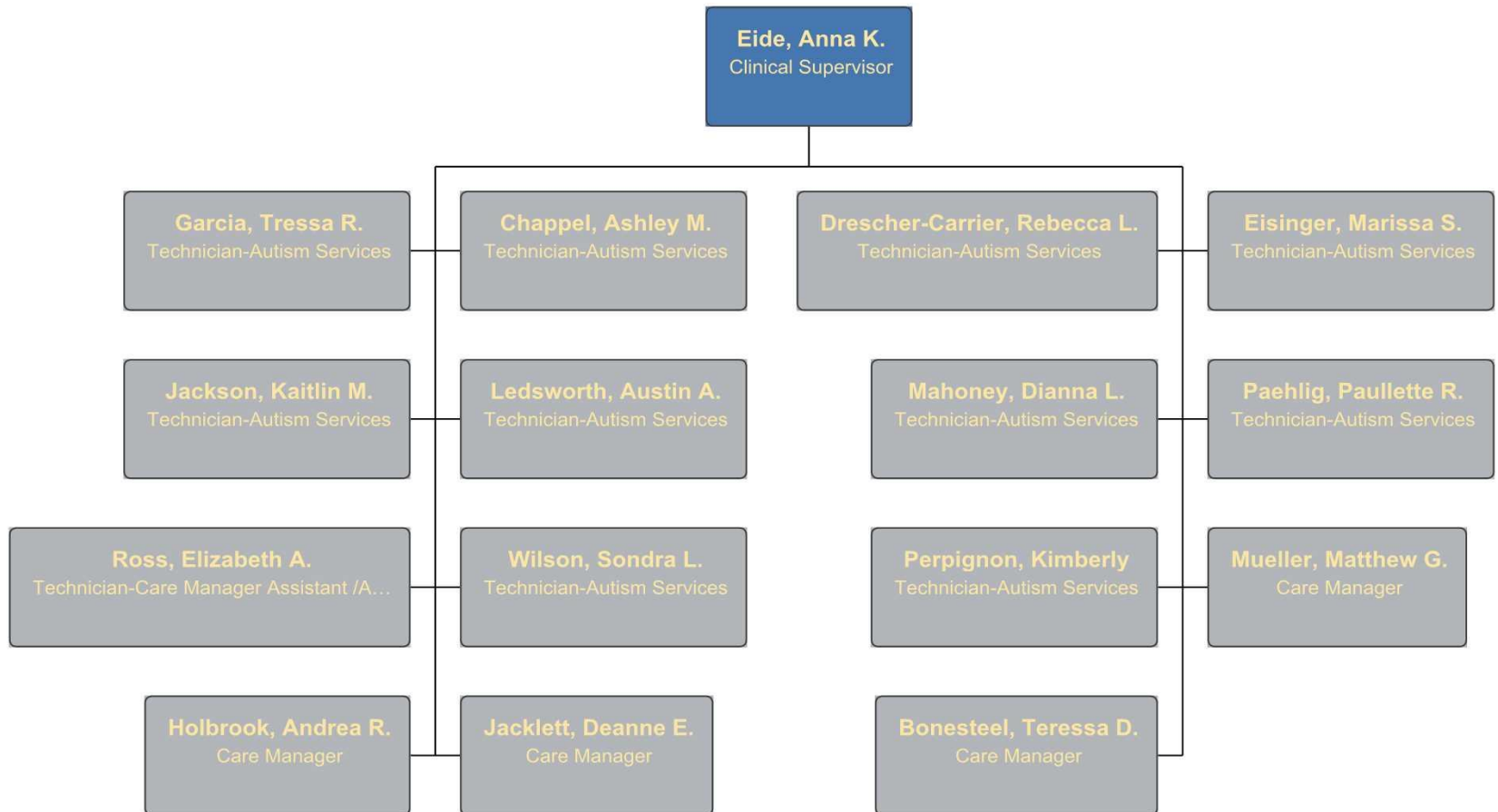
## Organizational Chart

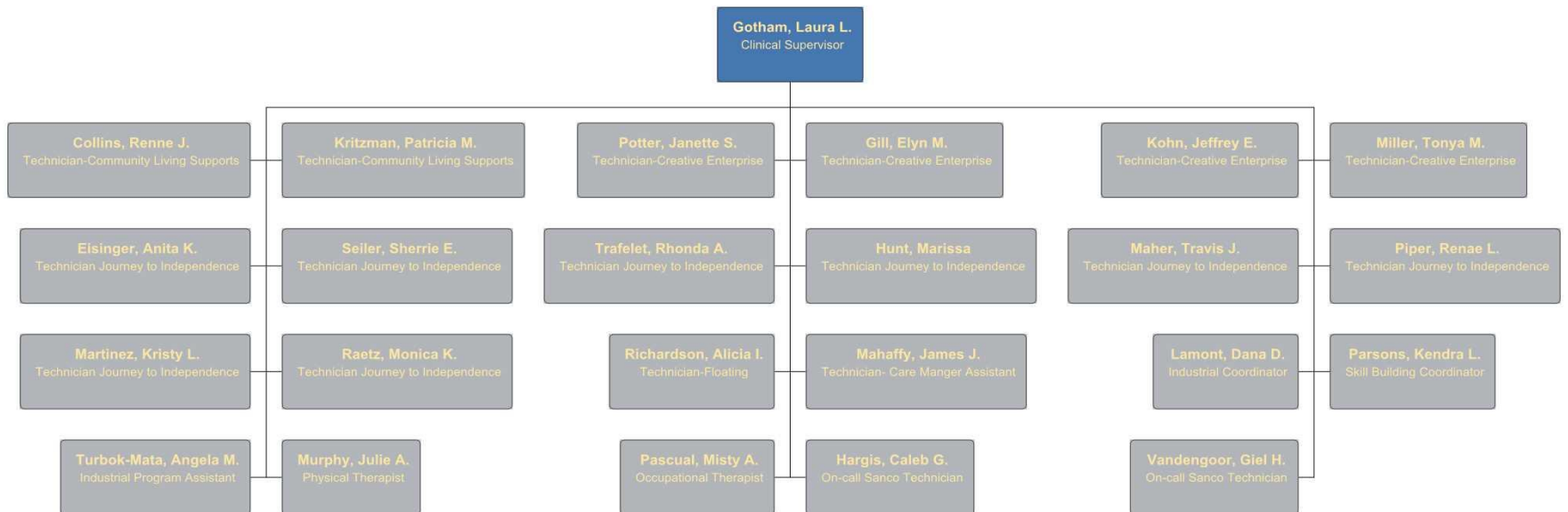
February 15, 2024

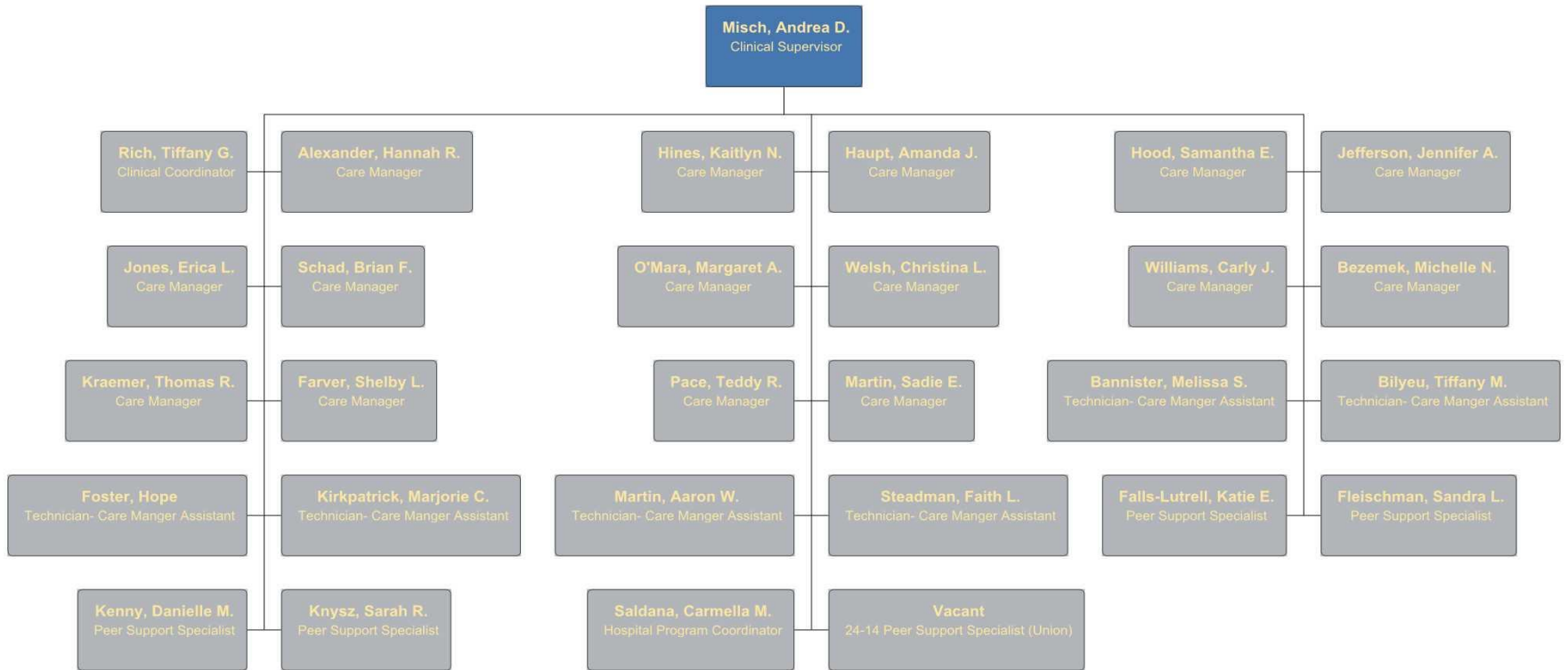














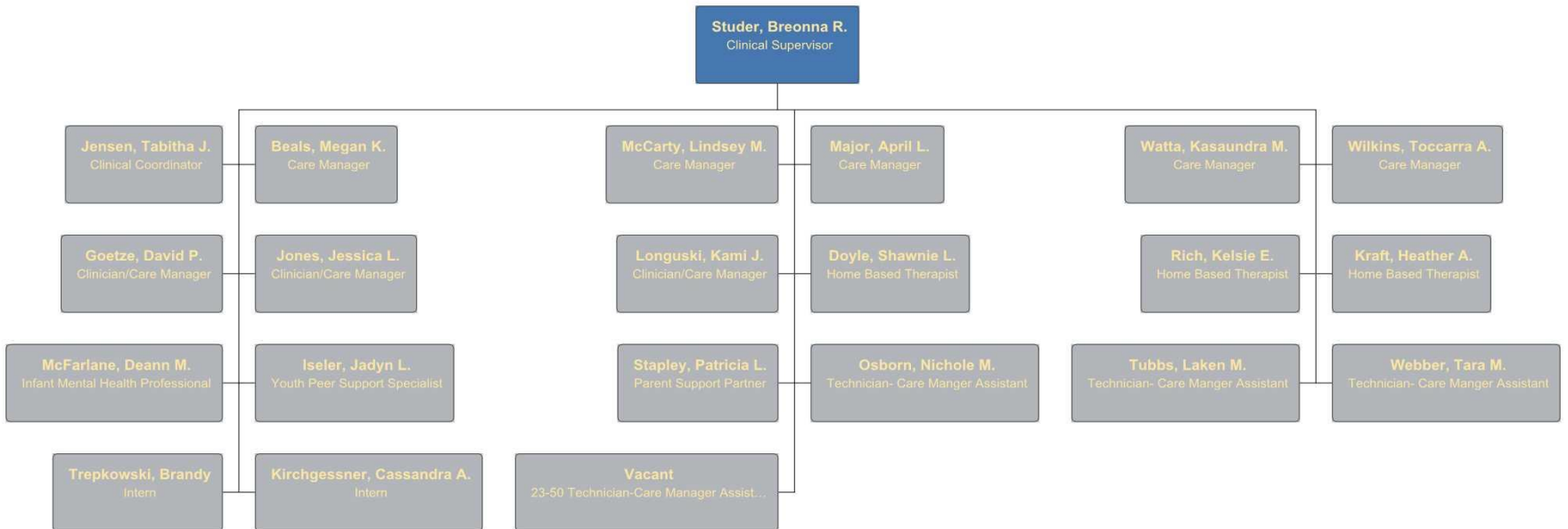
**Reinke, Jamie L.**  
Chief Program Officer

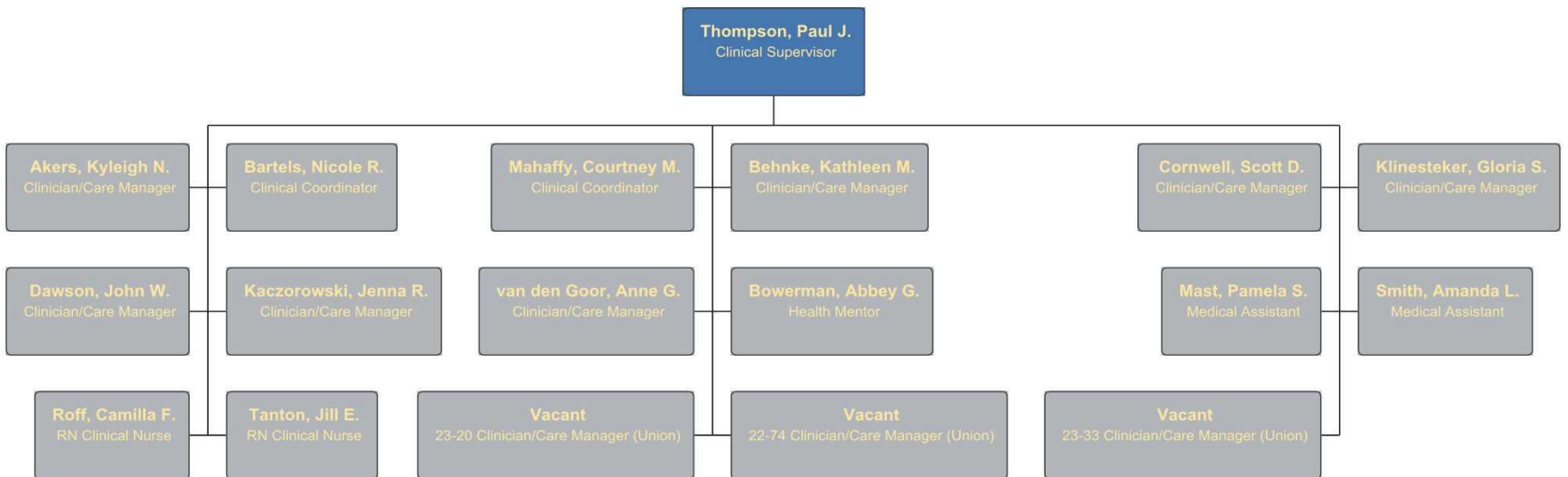
**Gotham, Laura L.**  
Clinical Supervisor

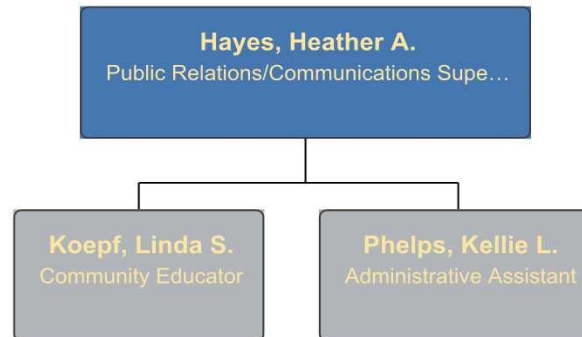
---

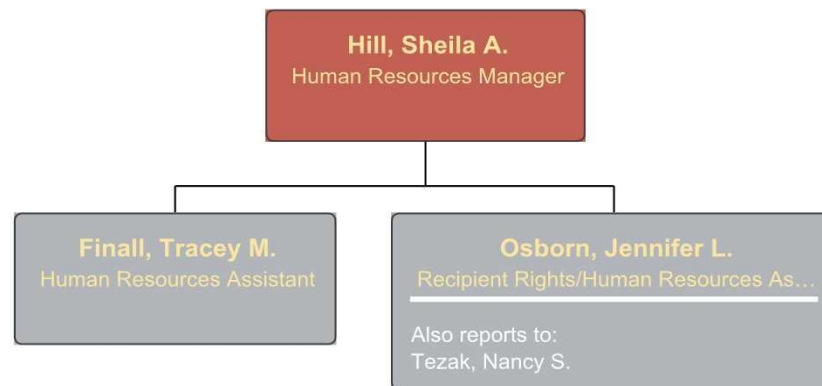
Also reports to:  
Beagle, Nicole M.

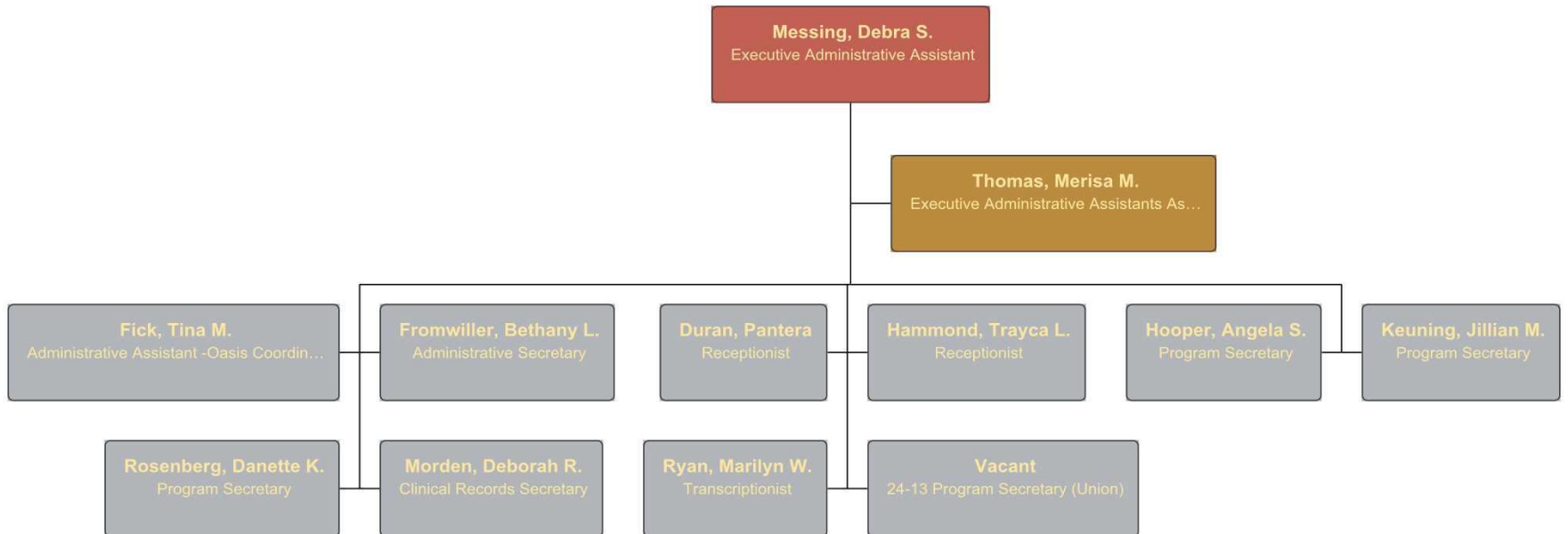


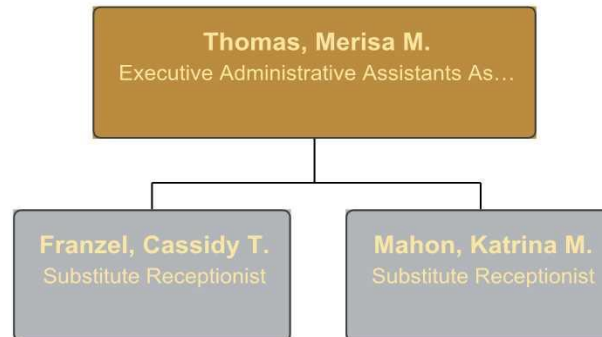


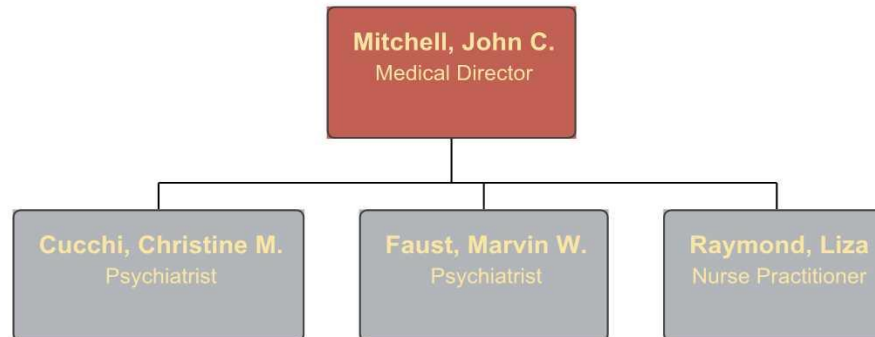










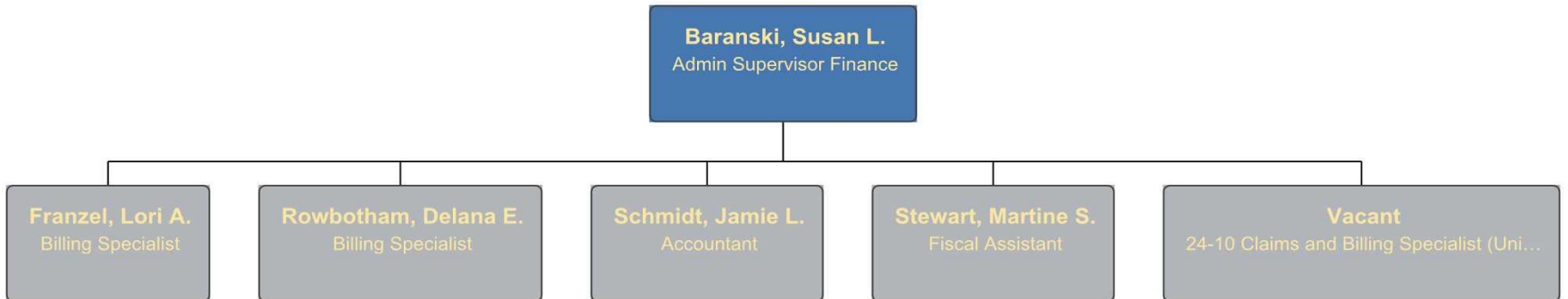




**Shaver, Anthony D.**  
Chief Financial Officer

**Baranski, Susan L.**  
Admin Supervisor Finance







**Tezak, Nancy S.**  
Recipient Rights Officer

**Osborn, Jennifer L.**  
Recipient Rights/Human Resources As...

Also reports to:  
Hill, Sheila A.

