

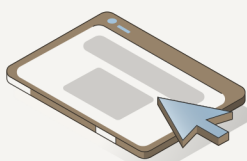
SUPPORTIVE EMPLOYMENT H2023 & JOB COACHING H2025 REFERRAL PROCESS

1



Care Manager completes referral specifying goals for employment.

2



Supervisor reviews and assigns to Program Coordinator.

- Program Coordinator does initial summary of services needed; schedules orientation with the Care Manager assistant.

3



Orientation Meeting

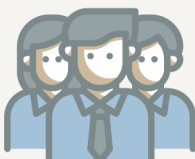
- Vocational profile is completed and plan for next steps are created.

4



Care Manager Assistant (employment specialist) sets follow-up appointments with individuals.

5



Supported employment assistance provided based on individual needs.

6



Job Coaching offered following employment; level based on individual need.